

General English Course

4th January ~ 18th June
13th September ~ 17th December

Our General English Courses are aimed at adults who want to improve their language skills for educational or professional purposes. Many of our students go on to take an IELTS exam (Melton College is the only IELTS Centre in York) in order to continue their studies at a British university.

Tuition

Melton College welcomes students throughout the year. Our programme includes a balance of grammar, speaking, reading, listening and writing.

Every student is assigned a personal tutor to monitor progress and to offer encouragement and advice. These tutorials are included in the fees but we do not count them as tuition time!

Guided e-learning

All General English Course students can use the Melton College Guided e-learning system. This virtual environment helps students plan their studies, contact other students and participate in the College's social life. Students continue to have access to the system for 3 months after their departure.

General English A: Half-day Programme

The course offers 15 hours' tuition per week. Half-day students are very much part of College life and can join all the activities on the social programme, as well as the excursions.

Like all Melton College courses, the tuition times are teaching time and do not include breaks, tutorials or preparation.

Social Life

We arrange a full and varied social programme and can introduce you to local sports clubs and societies.

Excursions are arranged on a regular basis to London, Edinburgh and The Lake District, as well as to many places of interest in Yorkshire.

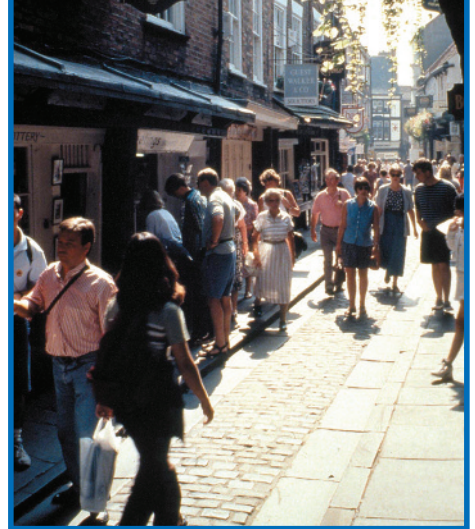


"The best experience I have had in the study of English."

BEATRICE

General English B: Full-day Programme

Students receive 22.5 hours' tuition each week, in addition to the morning tuition, a carefully structured afternoon programme includes extra reading and listening practice, linked to some of the famous sites in the City; literature and extra speaking skills, including student-led presentations. Study skills are included to help you make the most of your course.



Key Points

15 or 22.5 hours' tuition (Plus up to 7.5 hours' guided self study)

Minimum age 16

Maximum class size 12

Start any Monday

Stay as long as you want

Expert exam advice and preparation

Academic counselling and advice



Timetable

09.15-10.45	Lesson 1
10.45-11.15	Break
11.15-12.45	Lesson 2
12.45-13.45	Lunch
13.45-15.15	Lesson 3
15.15-15.30	Break
15.30-17.00	Tutorials, Presentations & Self Study